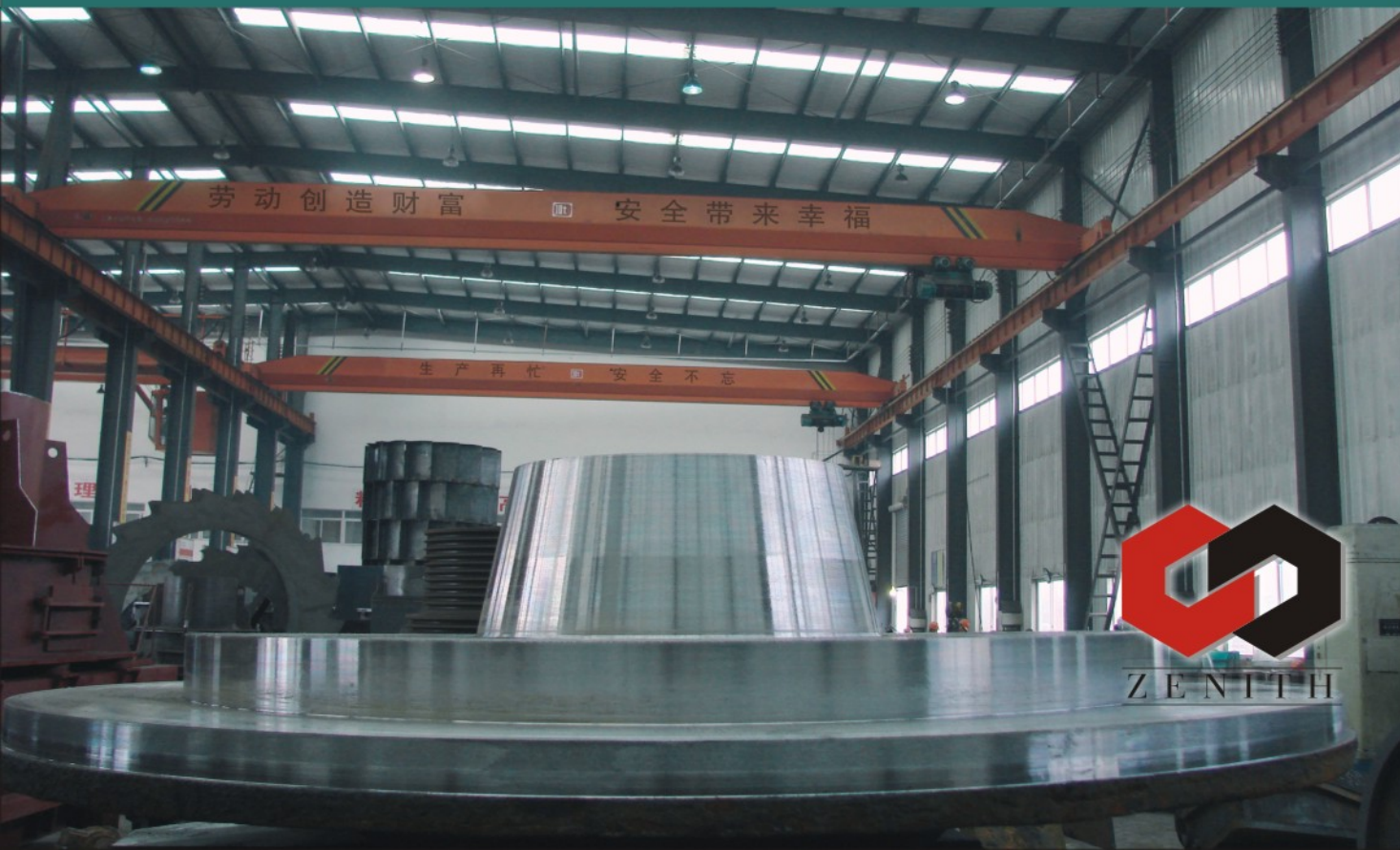




MCF  
粗粉磨

# ***MCF Coarse Powder Mill***

*A great new success in powder making field*

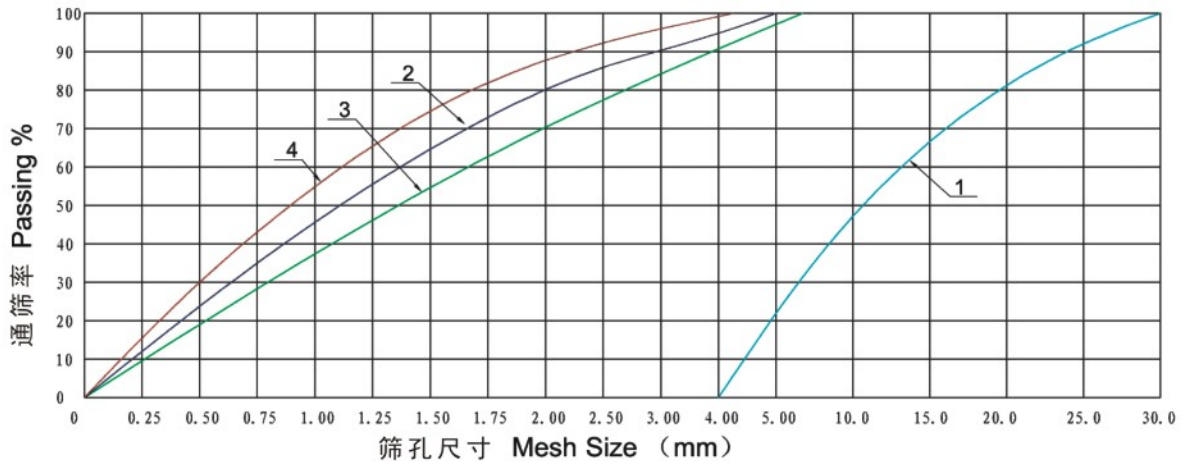


*A great new success in powder making field.*

Shanghai Zenith Electric Power Equipment Co., Ltd.  
Add: No.416 Jianye Road, South Jinqiao Area, Pudong  
New Area, Shanghai, China  
Tel: 0086-21-58386256 58386258  
Fax: 0086-21-58385887  
Zip: 201201  
Http://www.zenithcrusher.com  
E-mail: webmaster@zenithdream.com

磨粉领域的新突破

上海西芝电力设备有限公司  
地址：上海浦东新区金桥南区建业路416号  
电话：021-58386256 58386258  
传真：021-58385887  
邮编：201201  
网址：<http://www.zenithcrusher.com>  
邮箱：[webmaster@zenithdream.com](mailto:webmaster@zenithdream.com)



1. 进料粒度 2. 进料量正常 3. 进料量加大 4. 进料量减小 1. input size 2. normal input 3. increase the input 4. decrease the input

注:

- 1. 本曲线图是以石灰石为原料, 仅供参考。
- 2. 进料量的变化会改变出料粒度的变化
- 3. 转速变化也会改变出料粒度的变化。

Notes:

- 1. The above graph is base on limestone;
- 2. The change of the input amount will influence the output size;
- 3. The change of the rotation speed will influence the output size .

技术参数表 Specification Chart

表1 Table1

参数 Parameter	产品 Product	型号 Model	
		MCF1004	MCF1205
磨辊数量(个)	Roller quantity(pcs)	4	5
进料最大粒径(毫米)	Max. feeding size(mm)	<30	<35
开路成品粒度(毫米)	Product size(mm)	70-90%<2	70-90%<2
开路生产能力(吨/小时)	Capacity(ton/hour)	8-15	16-30
主机功率(千瓦)	Main motor power(kw)	37-45	75-90
主机外形尺寸(毫米) (长×宽×高)	Overall size(mm) (L×W×H)	1870×1500×2580	2350×1850×2850
设备重量(吨)	Total weight(excluding electricity control cabinet)(ton)	8	14

表2 Table 2

		配套设备 Optional Equipment	
细碎颚破	Jaw crusher	PEF150×750	PEF250×1000
配用功率(千瓦)	Power(kw)	15	30
畚斗提升机	Bucket elevator	TH250	TH315
配用功率(千瓦)	Power(kw)	3	7.5
电磁振动给料机	Vibrating feeder	GZ3F	GZ4F
功率(千瓦)	Power(kw)	0.2	0.4

注: 各项参数及外形若有变更, 恕不另行通知。 Note: Any change of technical data shall not be advised additionally.



## MCF粗粉磨

MCF Coarse Powder Mill

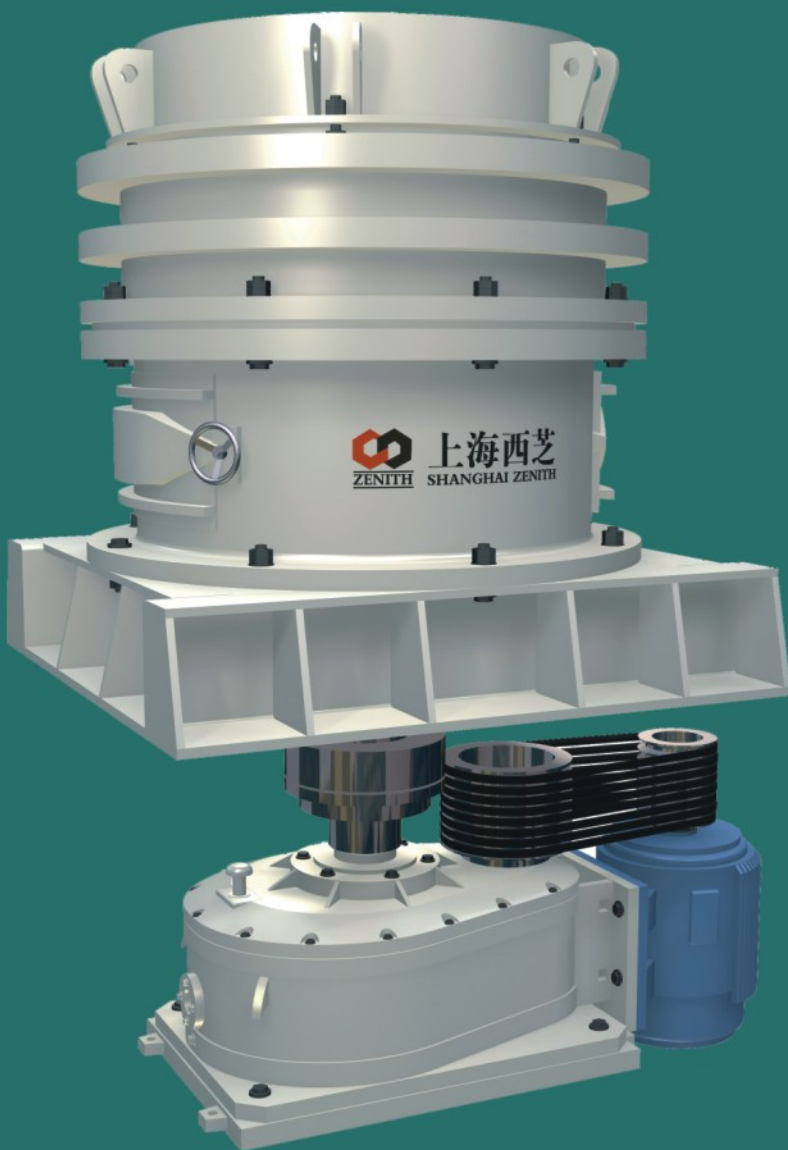
# MCF Coarse Powder Mill

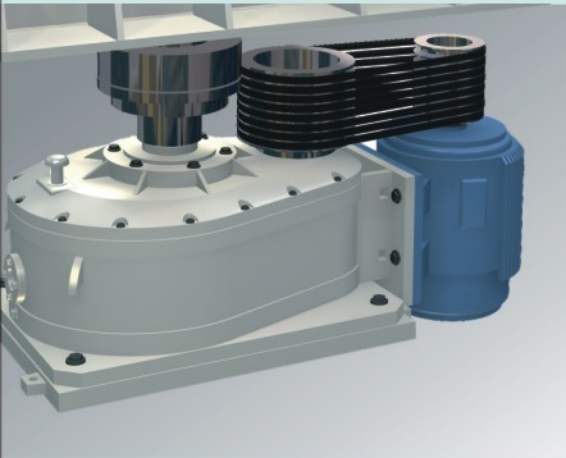
### 产品简介：

MCF系列粗粉磨是我公司磨粉设备专家集多年来在磨粉行业的研究经验，根据国内外客户的建议和要求，而设计出的一种新型高效磨粉设备，替代了雷蒙磨、球磨等只能加工细粉的传统磨粉设备，它广泛适用于石英砂、硅砂、铸造砂、磨具磨料砂等细砂行业，与选粉设备配套组成的闭路生产线，可生产出各种粒度的产品，使用更广泛、效果更佳。

### Brief Introduction:

MCF series Coarse Powder Mill is a kind of new high-tech milling machine to meet the requirements of coarse powder processing customers. Based on our experts' years' research experience in the milling industry and considering recommendations and requirements of domestic and foreign clients, it is the ideal equipment to replace Raymond Mill, ball mill, and other traditional mill which only process fine power materials. It is high-efficiency equipment and widely applied in quartz sand, silica sand, foundry sand, fine sand and other sand abrasive industry. By being a component of closed production lines, it can produce various size products of better effect.



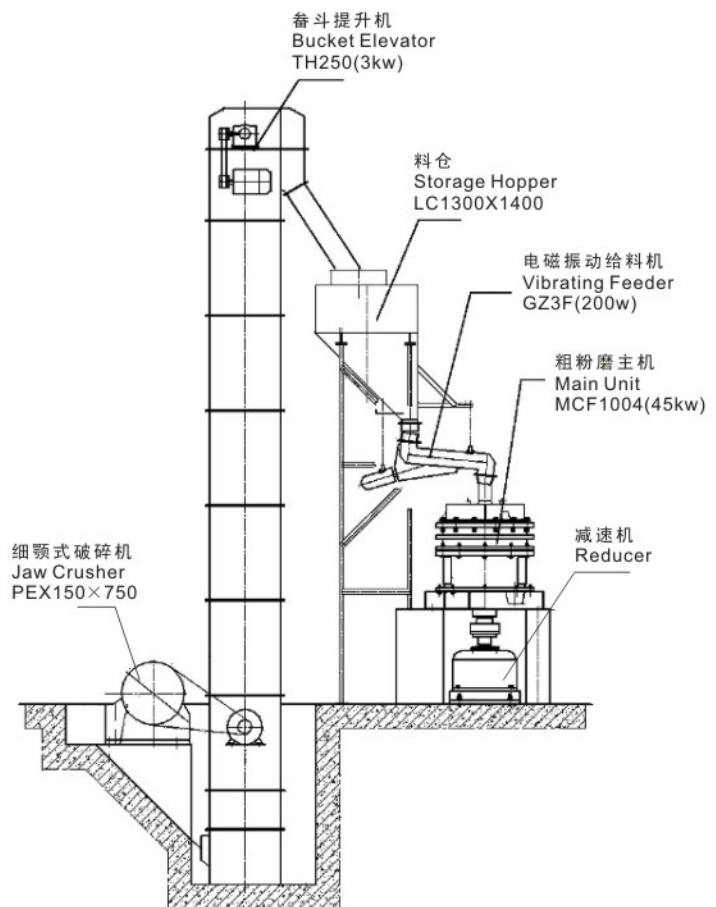


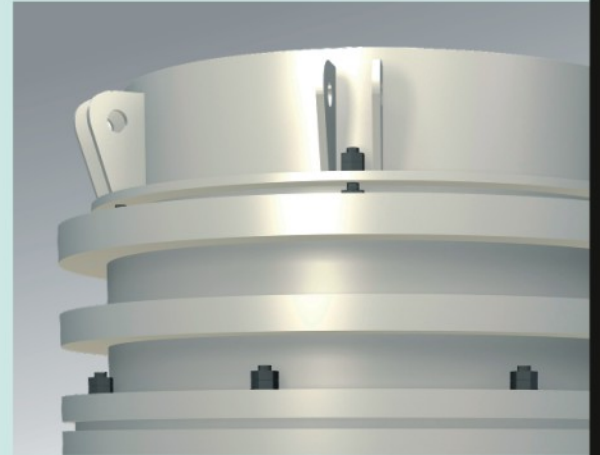
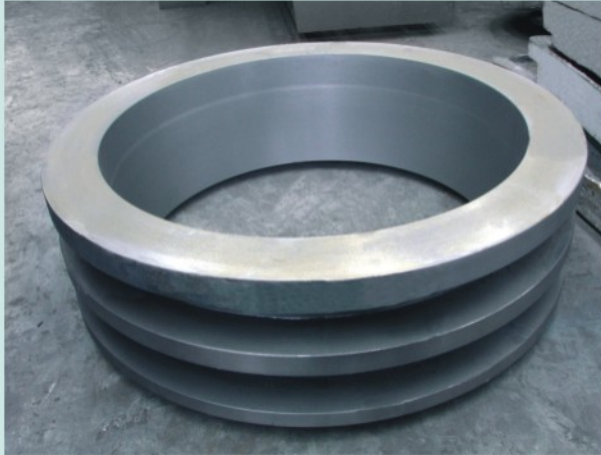
## 工作原理

电机通过减速机带动磨机主轴、散料盘、磨辊托架与主轴同步转动，磨辊总程装在托架之上，随主轴转动的同时自由摆动产生具大的离心力，在离心力的作用下以强大的压力把均匀散落在磨辊与磨环之间的物料层研磨成粉。最后落在底部，被同步转动的刮板推进出口排出。

## Working Principle

Step with main shaft, bulk disk and roller bracket is driven by motor through reducer. Installed above bracket, roller assembly rotates with main shaft and swings freely meantime, this bring a large centrifugal force, which scatters bulk materials evenly in grinding intermediate layer between central roller and ring. The bulk materials are grinded into powder and fall on the bottom, and then discharged from discharging opening under the effect of synchronously-rotating scraper.





## 技术优势

1. 该机磨损材料利用率高、磨损均匀，比雷蒙磨寿命高出3倍；
2. 该设备加工细沙，效果明显，细沙含量高，1-2毫米可达80%；
3. 该设备是电厂脱硫的一种高效设备，可将 $\text{CaCO}_3$ 粉磨成小于1-2毫米的细料，进行脱硫效果更佳；
4. 该设备可作为球磨前的预磨，可使球磨的效率提高50%；
5. 该设备加工出的产品用于制作耐火砖、免烧砖、砌块等新型建筑材料的颗粒与粉的级配最佳；
6. 该设备主要用于各种能粉碎的脆性物料、硬度小于莫氏硬度9级以下的非**易燃易爆**物料的预磨加工。

## Technology Advantages

1. High efficiency of wear material, wear evenly, the lifetime is three times higher than that of Raymond Mill;
2. High percentage of sand can be produced by this machine;
3. The mill is a highly efficient desulfurization equipment of power plant. It can grind  $\text{CaCO}_3$  into fine powder less than 1-2mm, the desulfurization effect is better;
4. This machine can be used as pre-grind equipment before ball mill; the ball mill efficiency will increase 50%.
5. Products out of this machine can be used to make firebrick, concrete brick, block and other new building materials;
6. Mainly used for pre-processing of various crushable non-inflammable & non-explosive brittle materials with Mohs hardness less than nine.